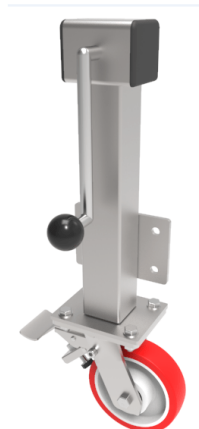


Polyurethane Nylon Plate Swivel Castor Brake Locking Castor 150mm 500kg Load

Product code: JAZHS150NPSWB

Side winding jacking unit with maximum lift of 200mm fitted with a Fabricated swivel castor with a top plate fixing fitted with a red polyurethane tyre on a white nylon centred wheel with plain bore and total lock brake. Wheel diameter 150mm, tread width 40mm, maximum Load for the complete unit is capacity 500kg. Please note Jacking castors are rated on a different principal to other castors and we recommend the total lifted load is divided over just 2 jacking units. for other dimensions please refer to the BIL catalogue or request a drawing. when jacked up to the height please be aware of any obstacles as a sudden shock could result in the inner square tube bending around the outer tube. DO NOT OVERWIND Handle excessively more than what is needed as this will cause the pin in the gearbox to shear. (This is a safety precaution against over loading the unit)



Diameter (mm)	150
Castor Height (mm)	190
Castor Type	Swivel with Total Lock Brake
Swivel Radius (mm)	145
Fixing Option	Plate
Bearing Type	Plain
To Suit Fixing Bolt (mm)	10
Wheel Material	Polyurethane on Nylon
Colour / Shore Hardness	Red Polyurethane on Nylon Rim / 96 Shore A
Temperature Resistance	-20 °C TO +70 °C
Load Capacity (kg)	500
Tread (mm)	40
Height (mm)	597 / 797
Lifting Stroke (mm)	200
Handle Option	Fixed

BIL GROUP LTD

Porte Marsh Road, Calne, Wiltshire, SN11 9BW

Registered in England No: 2603821

VAT Reg: GB572705729

