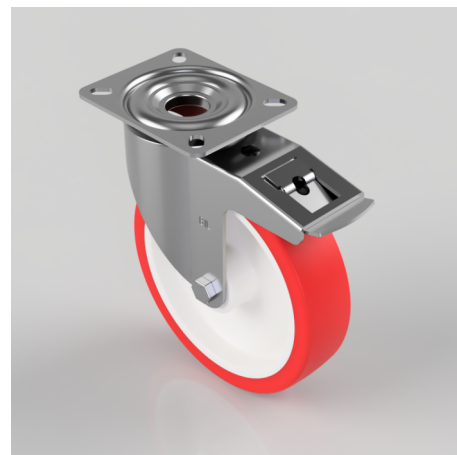


Polyurethane Nylon Plate Swivel Castor Brake 200mm 400kg Load

Product code: BZMM200NPBSWB

Pressed steel swivel castor with a top plate fitted with a red polyurethane tyre on white nylon cantered wheel with roller bearings and a total lock brake, wheel diameter 200mm, tread width 50mm, overall height 235mm, top plate 135mm x 110mm with hole centres 105 x 80/75mm, with a load capacity of 400kgs.



Diameter (mm)	200
Castor Type	Swivel with Total Lock Brake
Fixing Option	Plate
Height (mm)	235
Wheel Material	Polyurethane on Nylon
Colour / Shore Hardness	Red Polyurethane on Nylon Rim / 96 Shore A
Temperature Resistance	-20 °C TO +70 °C
Bearing Type	Roller
Load Capacity (kg)	400
Tread (mm)	50
Swivel Radius (mm)	167
Plate Size (mm)	140 x 110
Hole Centres (mm)	105 x 80
Top Plate Thickness (mm)	3
Fork Thickness (mm)	3
To Suit Fixing Bolt (mm)	10

BIL GROUP LTD

Porte Marsh Road, Calne, Wiltshire, SN11 9BW

Registered in England No: 2603821

VAT Reg: GB572705729

