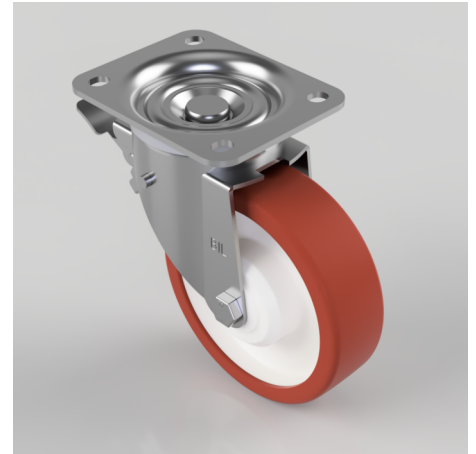


## Polyurethane Nylon Plate Swivel Castor Brake 150mm 350kg Load

**Product code: BZWB150PNBSWB**

Pressed steel swivel castor with a top plate fitted with a brown polyurethane on white nylon centered wheel with roller bearings with a total lock brake. 150mm wheel diameter, 45mm tread width, 190mm overall height, 135mm x 110mm top plate, 105mm x 80/75mm hole centres with a load capacity of 350kgs.



Diameter (mm)	150
Castor Type	Swivel with Total Lock Brake
Fixing Option	Plate
Height (mm)	190
Wheel Material	Polyurethane on Nylon
Colour / Shore Hardness	Brown Polyurethane on Nylon Rim / 96 Shore A
Temperature Resistance	-20 °C TO +60 °C
Bearing Type	Roller
Load Capacity (kg)	350
Tread (mm)	45
Swivel Radius (mm)	128
Plate Size (mm)	135 x 110
Hole Centres (mm)	105 x 80/75
Top Plate Thickness (mm)	4
Fork Thickness (mm)	3
Brake Type	Leading Brake
To Suit Fixing Bolt (mm)	10

## BIL GROUP LTD

Porte Marsh Road, Calne, Wiltshire, SN11 9BW

Registered in England No: 2603821

VAT Reg: GB572705729

