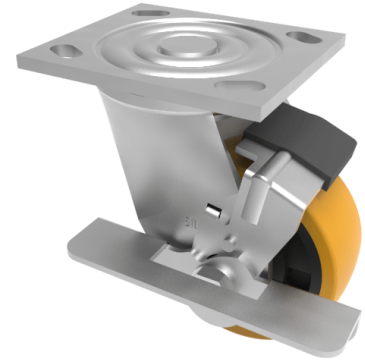


## Polyurethane Nylon Plate Swivel Castor Brake 125mm 400kg Load

**Product code: BZJ125XPNBBK/USA**

Fabricated swivel castor with a flat plate fixing fitted with a brown polyurethane tyre on black nylon centred wheel with roller bearings and a side fitting wheel brake. Wheel diameter 125mm, tread width 45mm, overall height 165mm, plate size 115mm x 102mm, hole centres 92mm x 67mm and 76mm x 76mm. Load capacity 400kg.



Diameter (mm)	125
Fixing Option	Plate
Castor Type	Swivel with Wheel Brake
Bearing Type	Roller
Height (mm)	165
Plate Size (mm)	115 x 102
Hole Centres (mm)	76/92 x 76/67
To Suit Fixing Bolt (mm)	10
Wheel Material	Polyurethane on Nylon
Colour / Shore Hardness	Brown Polyurethane on Nylon Rim / 96 Shore A
Temperature Resistance	-20 °C TO +80 °C
Top Plate Thickness (mm)	5.5
Fork Thickness (mm)	5.5
Swivel Radius (mm)	126
Load Capacity (kg)	400
Tread (mm)	45

### BIL GROUP LTD

Porte Marsh Road, Calne, Wiltshire, SN11 9BW

Registered in England No: 2603821

VAT Reg: GB572705729

