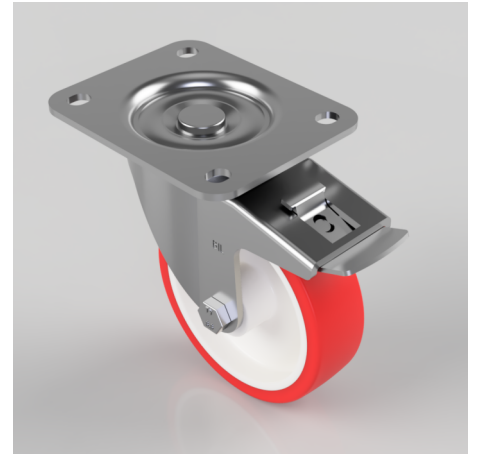


Polyurethane Nylon Plate Swivel Castor Brake 125mm 300kg Load

Product code: BZPH125NPBSWB

Pressed steel swivel castor with a top plate fixing fitted with a red polyurethane on white nylon centred wheel with a roller bearing and total lock brake. Wheel diameter 125mm, tread width 36mm, overall height 158mm, top plate 135mm x 110mm, hole centres 105mm x 80/75mm. Load capacity 300kg.



Diameter (mm)	125
Castor Type	Swivel with Total Lock Brake
Fixing Option	Plate
Height (mm)	158
Wheel Material	Polyurethane on Nylon
Colour / Shore Hardness	Red Polyurethane on Nylon Rim / 96 Shore A
Temperature Resistance	-20 °C TO +70 °C
Bearing Type	Roller
Load Capacity (kg)	300
Tread (mm)	36
Swivel Radius (mm)	125
Plate Size (mm)	135 x 110
Hole Centres (mm)	105 x 80/75
Top Plate Thickness (mm)	4
Fork Thickness (mm)	4
To Suit Fixing Bolt (mm)	10

BIL GROUP LTD

Porte Marsh Road, Calne, Wiltshire, SN11 9BW

Registered in England No: 2603821

VAT Reg: GB572705729

