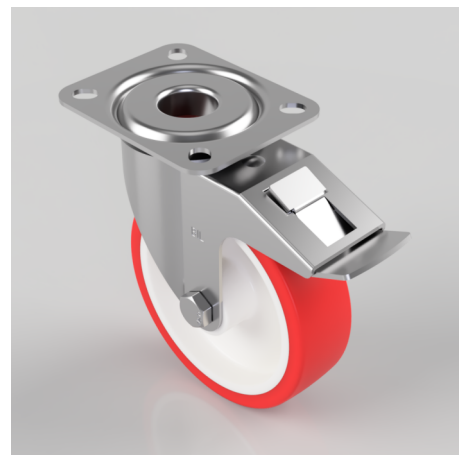


Polyurethane Nylon Plate Swivel Castor Brake 125mm 200kg Load

Product code: SSMM125NPBSWB

Grade 304 Pressed steel swivel castor with top plate fixing fitted with a red polyurethane tyre on white nylon centre wheel with a roller bearing and total lock brake. Wheel diameter 125mm, tread width 36mm, overall height 155mm, top plate 105mm x 85mm, hole centres 80mm x 60mm. Load capacity 200kg.



Diameter (mm)	125
Fixing Option	Plate
Castor Type	Swivel with Total Lock Brake
Height (mm)	155
Wheel Material	Polyurethane on Nylon
Colour / Shore Hardness	Red Polyurethane on Nylon Rim / 96 Shore A
Bearing Type	Roller
Tread (mm)	36
Fork Thickness (mm)	2
To Suit Fixing Bolt (mm)	8
Load Capacity (kg)	200
Temperature Resistance	-20 °C TO +70 °C
Plate Size (mm)	105 X 85
Hole Centres (mm)	80 X 60
Top Plate Thickness (mm)	2.5
Swivel Radius (mm)	123

BIL GROUP LTD

Porte Marsh Road, Calne, Wiltshire, SN11 9BW

Registered in England No: 2603821

VAT Reg: GB572705729

