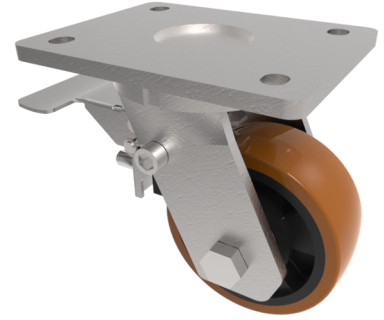


Polyurethane Nylon Plate Swivel Castor Brake 100mm 300kg Load

Product code: BZMJ100XPNBJSWB



Fabricated white zinc ROHS plated swivel castor with a top plate fixing fitted with a brown polyurethane tyred on a black nylon centred wheel ball bearings with a total lock brake. Wheel diameter 100mm, tread width 40mm, overall height 143mm, top plate 138mm x 110mm, hole centres 105mm x 80mm/75mm. Load capacity 300kg.

Diameter (mm)	100
Fixing Option	Plate
Castor Type	Swivel with Total Lock Brake
Bearing Type	Ball
Height (mm)	143
Plate Size (mm)	138 x 110
Hole Centres (mm)	105 x 80/75
To Suit Fixing Bolt (mm)	10
Wheel Material	Polyurethane on Nylon
Colour / Shore Hardness	Brown Polyurethane on Nylon Rim / 96 Shore A
Temperature Resistance	-20 °C TO +80 °C
Top Plate Thickness (mm)	7
Fork Thickness (mm)	6
Swivel Radius (mm)	93
Load Capacity (kg)	300
Tread (mm)	40

BIL GROUP LTD

Porte Marsh Road, Calne, Wiltshire, SN11 9BW

Registered in England No: 2603821

VAT Reg: GB572705729

