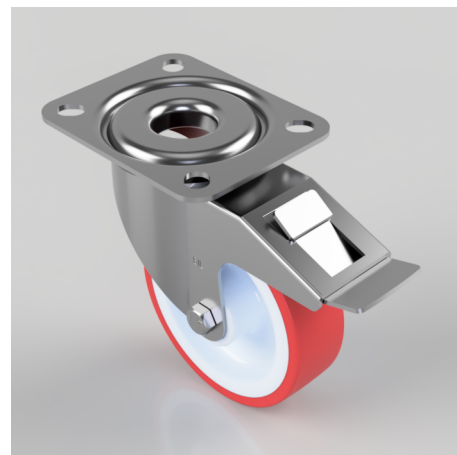


Polyurethane Nylon Plate Swivel Castor Brake 100mm 180kg Load

Product code: BZMM100NPBSWB

Pressed steel swivel castor, fitted with a top plate, red polyurethane on white nylon centered wheel, with roller bearings, swivel and wheel brake, 100mm wheel diameter, 30mm tread width, 128mm overall height, 105 x 85mm top plate, 80 x 60mm bolt holes, with a load capacity of 180kgs



Diameter (mm)	100
Castor Type	Swivel with Total Lock Brake
Fixing Option	Plate
Height (mm)	128
Wheel Material	Polyurethane on Nylon
Colour / Shore Hardness	Red Polyurethane on Nylon Rim / 96 Shore A
Temperature Resistance	-20 °C TO +70 °C
Bearing Type	Roller
Load Capacity (kg)	180
Tread (mm)	30
Swivel Radius (mm)	118
Plate Size (mm)	105 X 85
Hole Centres (mm)	80 X 60
Top Plate Thickness (mm)	2.5
Fork Thickness (mm)	2
To Suit Fixing Bolt (mm)	8

BIL GROUP LTD

Porte Marsh Road, Calne, Wiltshire, SN11 9BW

Registered in England No: 2603821

VAT Reg: GB572705729

