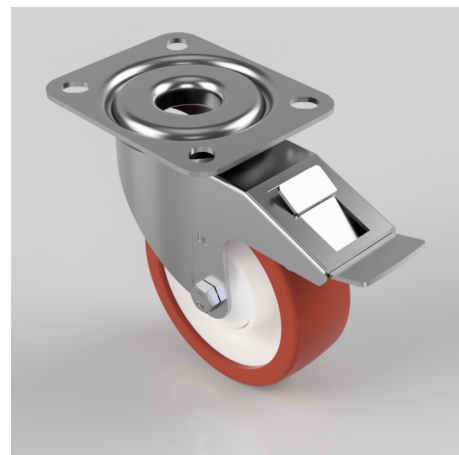


Polyurethane Nylon Plate Swivel Castor Brake 100mm 150kg Load

Product code: BZMM100PNBJSWB

Pressed steel swivel castor with a top plate fixing fitted with a brown polyurethane white nylon centred wheel with a single ball bearing with retaining caps and total lock brake. Wheel diameter 100mm, tread width 35mm, overall height 128mm, top plate 105mm x 85mm, hole centres 80mm x 60mm. load capacity 150kg,



Diameter (mm)	100
Castor Type	Swivel with Total Lock Brake
Fixing Option	Plate
Height (mm)	128
Wheel Material	Polyurethane on Nylon
Colour / Shore Hardness	Brown Polyurethane on Nylon Rim / 96 Shore A
Temperature Resistance	-20 °C TO +60 °C
Bearing Type	Ball
Load Capacity (kg)	150
Tread (mm)	35
Swivel Radius (mm)	88
Plate Size (mm)	105 X 85
Hole Centres (mm)	80 X 60
Top Plate Thickness (mm)	2
Fork Thickness (mm)	2
To Suit Fixing Bolt (mm)	8

BIL GROUP LTD

Porte Marsh Road, Calne, Wiltshire, SN11 9BW

Registered in England No: 2603821

VAT Reg: GB572705729

