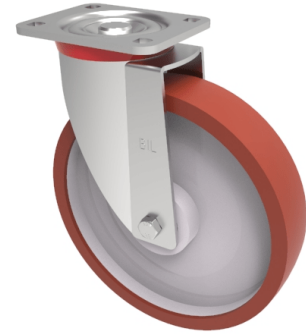


Polyurethane Nylon Plate Swivel Castor 250mm 600kg Load

Product code: BZP250PNBJ



Pressed steel swivel castor with a flat plate fixing fitted with a brown polyurethane on white nylon centred wheel with ball bearing. Wheel diameter 250mm, tread width 50mm, overall height 300mm, plate size 135mm x 110mm, hole centres 105mm x 80mm . Load capacity 600kg.

Diameter (mm)	250
Castor Type	Swivel
Fixing Option	Plate
Height (mm)	292
Wheel Material	Polyurethane on Nylon
Colour / Shore Hardness	Brown Polyurethane on Nylon Rim / 96 Shore A
Temperature Resistance	-20 °C TO +60 °C
Bearing Type	Ball
Load Capacity (kg)	600
Tread (mm)	50
Swivel Radius (mm)	180
Plate Size (mm)	135 x 110
Hole Centres (mm)	105 x 80
Top Plate Thickness (mm)	6
Fork Thickness (mm)	4
To Suit Fixing Bolt (mm)	12

BIL GROUP LTD

Porte Marsh Road, Calne, Wiltshire, SN11 9BW

Registered in England No: 2603821

VAT Reg: GB572705729

