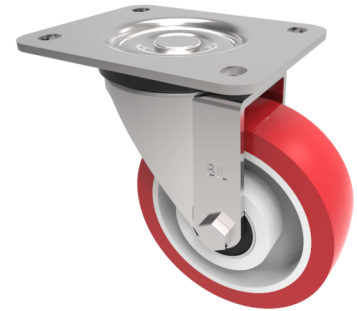


## Polyurethane Nylon Plate Swivel Castor 125mm 350kg Load

**Product code: BZPH125NPBJ**

Pressed steel swivel castor with a top plate fixing fitted with a red polyurethane on white nylon centred wheel with ball bearings. Wheel diameter 125mm, tread width 40mm, overall height 155mm, top plate 135mm x 110mm, hole centres 105mm x 80mm. Load capacity 350kg. NB due to the fact these are reinforced nylon the white centre is slightly off white.



Diameter (mm)	125
Castor Type	Swivel
Fixing Option	Plate
Height (mm)	155
Wheel Material	Polyurethane on Nylon
Colour / Shore Hardness	Red Polyurethane on Nylon Rim / 96 Shore A
Temperature Resistance	-20 °C TO +70 °C
Bearing Type	Ball
Load Capacity (kg)	350
Tread (mm)	40
Swivel Radius (mm)	104
Plate Size (mm)	135 x 110
Hole Centres (mm)	105 x 80/75
Top Plate Thickness (mm)	4
Fork Thickness (mm)	4
To Suit Fixing Bolt (mm)	10

## BIL GROUP LTD

Porte Marsh Road, Calne, Wiltshire, SN11 9BW

Registered in England No: 2603821

VAT Reg: GB572705729

