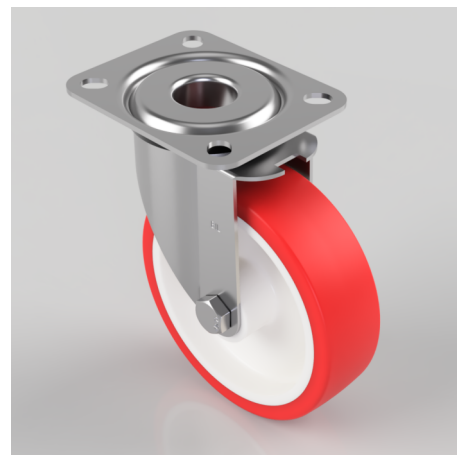


## Polyurethane Nylon Plate Swivel Castor 125mm 200kg Load

**Product code: SSMM125NPB**

Grade 304 Pressed stainless steel swivel castor, fitted with a top plate fitted with a red polyurethane tyred on white nylon centered wheel, with roller bearings, 125mm wheel diameter, 36mm tread width, 155mm overall height, 105 x 85 top plate, 80mm x 60mm bolt holes, with a load capacity of 200kg.



Diameter (mm)	125
Fixing Option	Plate
Castor Type	Swivel
Height (mm)	155
Wheel Material	Polyurethane on Nylon
Colour / Shore Hardness	Red Polyurethane on Nylon Rim / 96 Shore A
Bearing Type	Roller
Tread (mm)	36
Fork Thickness (mm)	2
To Suit Fixing Bolt (mm)	8
Load Capacity (kg)	200
Temperature Resistance	-20 °C TO +70 °C
Plate Size (mm)	105 X 85
Hole Centres (mm)	80 X 60
Top Plate Thickness (mm)	2.5
Swivel Radius (mm)	95

## BIL GROUP LTD

Porte Marsh Road, Calne, Wiltshire, SN11 9BW

Registered in England No: 2603821

VAT Reg: GB572705729

