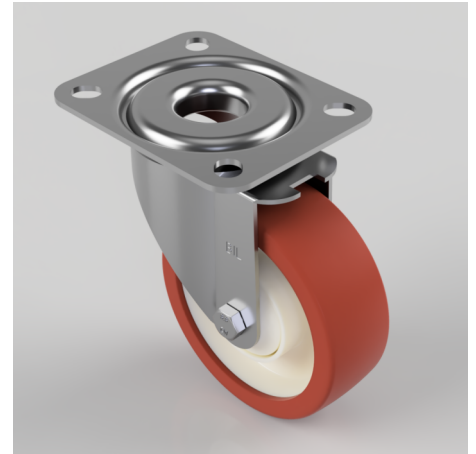


Polyurethane Nylon Plate Swivel Castor 100mm 170kg Load

Product code: BZMM100PNBJ

Pressed steel swivel castor with a top plate fixing fitted with a brown polyurethane white nylon centred wheel with a single ball bearing with retaining caps. Wheel diameter 100mm, tread width 35mm, overall height 128mm, top plate 105mm x 85mm, hole centres 80mm x 60mm. Load capacity 170kg.



Diameter (mm)	100
Castor Type	Swivel
Fixing Option	Plate
Height (mm)	128
Wheel Material	Polyurethane on Nylon
Colour / Shore Hardness	Brown Polyurethane on Nylon Rim / 96 Shore A
Temperature Resistance	-20 °C TO +60 °C
Bearing Type	Ball
Load Capacity (kg)	170
Tread (mm)	35
Swivel Radius (mm)	84
Plate Size (mm)	105 X 85
Hole Centres (mm)	80 X 60
Top Plate Thickness (mm)	2.5
Fork Thickness (mm)	2
To Suit Fixing Bolt (mm)	8