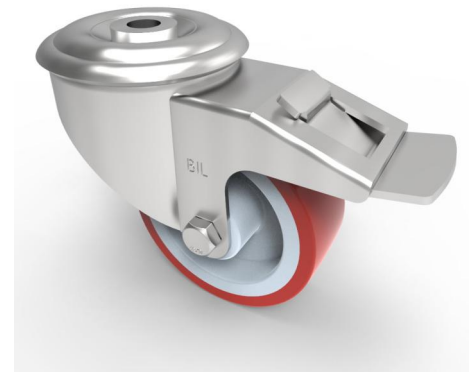


Polyurethane Nylon Bolt Hole Swivel Castor Brake 80mm 150kg Load

Product code: SSMM80NPBH12SWB

Grade 304 Pressed stainless steel swivel castor with a 12mm bolt hole fixing fitted with a red polyurethane tyre on white nylon centred wheel with a plain bore and swivel wheel brake. Wheel diameter 80mm, tread width 30mm, overall height 105mm. Load capacity 150kg.



Diameter (mm)	80
Fixing Option	Bolt Hole
Castor Type	Swivel with Total Lock Brake
Height (mm)	105
Wheel Material	Polyurethane on Nylon
Colour / Shore Hardness	Red Polyurethane on Nylon Rim / 96 Shore A
Bearing Type	Plain
Tread (mm)	30
Fork Thickness (mm)	2
To Suit Fixing Bolt (mm)	12
Load Capacity (kg)	150
Temperature Resistance	-20 °C TO +70 °C
Head Dia (mm)	76
Swivel Radius (mm)	111

BIL GROUP LTD

Porte Marsh Road, Calne, Wiltshire, SN11 9BW

Registered in England No: 2603821

VAT Reg: GB572705729

