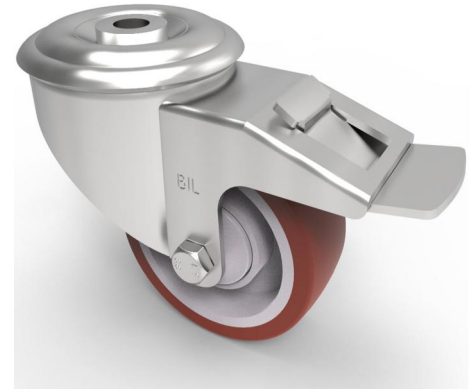


Polyurethane Nylon Bolt Hole Swivel Castor Brake 80mm 150kg Load

Product code: BZMM80PNBJBH12SWB

Pressed steel swivel castor with a 12mm bolt hole fixing fitted with a brown polyurethane tyred on white nylon centred wheel with a single ball bearing with retaining caps and total lock brake. Wheel diameter 80mm, tread width 30mm, overall height 105mm, Load capacity 150kg.



Diameter (mm)	80
Castor Type	Swivel with Total Lock Brake
Fixing Option	Bolt Hole
Height (mm)	105
Wheel Material	Polyurethane on Nylon
Colour / Shore Hardness	Brown Polyurethane on Nylon Rim / 96 Shore A
Temperature Resistance	-20 °C TO +60 °C
Bearing Type	Ball
Load Capacity (kg)	150
Tread (mm)	30
Swivel Radius (mm)	78
Head Dia (mm)	76
Fork Thickness (mm)	2
To Suit Fixing Bolt (mm)	12

BIL GROUP LTD

Porte Marsh Road, Calne, Wiltshire, SN11 9BW

Registered in England No: 2603821

VAT Reg: GB572705729

