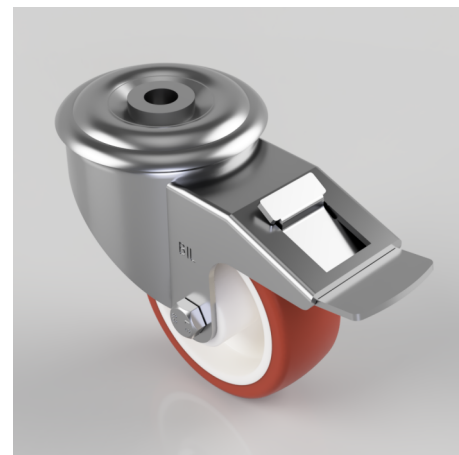


Polyurethane Nylon Bolt Hole Swivel Castor Brake 80mm 120kg Load

Product code: BZMM80PNBBH12SWB

Pressed steel swivel castor with a 12mm bolt hole fixing fitted with a brown polyurethane tyred on white nylon centred wheel with a roller bearing and total lock brake. Wheel diameter 80mm, tread width 30mm, overall height 105mm, Load capacity 120kg.



Diameter (mm)	80
Castor Type	Swivel with Total Lock Brake
Fixing Option	Bolt Hole
Height (mm)	105
Wheel Material	Polyurethane on Nylon
Colour / Shore Hardness	Brown Polyurethane on Nylon Rim / 96 Shore A
Temperature Resistance	-20 °C TO +60 °C
Bearing Type	Roller
Load Capacity (kg)	120
Tread (mm)	30
Swivel Radius (mm)	112
Head Dia (mm)	76
Fork Thickness (mm)	2.5
To Suit Fixing Bolt (mm)	12

BIL GROUP LTD

Porte Marsh Road, Calne, Wiltshire, SN11 9BW

Registered in England No: 2603821

VAT Reg: GB572705729

