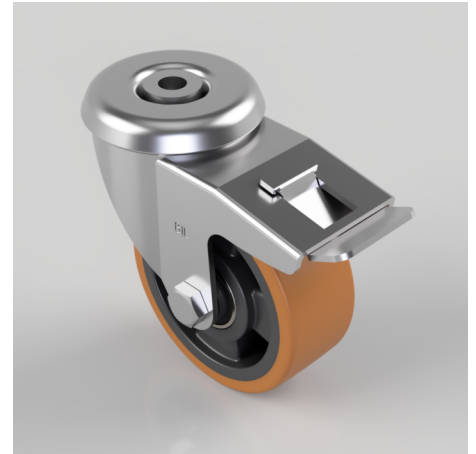


Polyurethane Nylon Bolt Hole Swivel Castor Brake 100mm 300kg Load

Product code: SSEH100XPNBJBH12SWB

Stainless Pressed steel swivel castor with a bolt hole fixing fitted with a brown polyurethane tyre on black nylon centred wheel with stainless ball bearings with total lock brake. Wheel diameter 100mm, tread width 40mm, overall height 128mm, bolt hole 12mm. Load capacity 300kg



Diameter (mm)	100
Fixing Option	Bolt Hole
Castor Type	Swivel with Total Lock Brake
Height (mm)	128
Wheel Material	Polyurethane on Nylon
Colour / Shore Hardness	Brown Polyurethane on Nylon Rim / 96 Shore A
Bearing Type	Ball
Tread (mm)	40
Fork Thickness (mm)	3
To Suit Fixing Bolt (mm)	12
Load Capacity (kg)	300
Temperature Resistance	-20 °C TO +80 °C
Head Dia (mm)	78
Swivel Radius (mm)	115

BIL GROUP LTD

Porte Marsh Road, Calne, Wiltshire, SN11 9BW

Registered in England No: 2603821

VAT Reg: GB572705729

