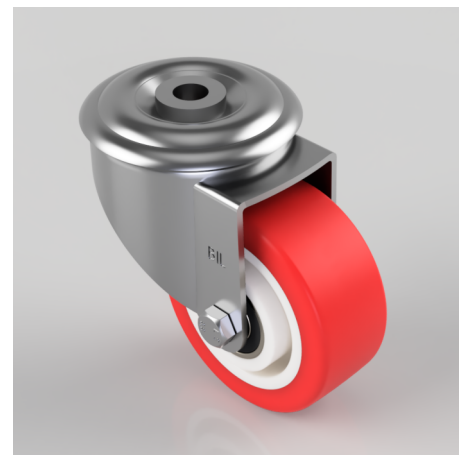


Polyurethane Nylon Bolt Hole Swivel Castor 80mm 150kg Load

Product code: BZMM80NPBJBH12

Pressed steel swivel castor with 12mm bolt hole fixing fitted with red polyurethane tyre on white nylon centred wheel with a ball bearing. Wheel diameter 80mm, tread width 33mm, overall height 105mm, Load capacity 150kg.



| | |
|--------------------------|--|
| Diameter (mm) | 80 |
| Castor Type | Swivel |
| Fixing Option | Bolt Hole |
| Height (mm) | 105 |
| Wheel Material | Polyurethane on Nylon |
| Colour / Shore Hardness | Red Polyurethane on Nylon Rim / 96 Shore A |
| Temperature Resistance | -20 °C TO +70 °C |
| Bearing Type | Ball |
| Load Capacity (kg) | 150 |
| Tread (mm) | 33 |
| Swivel Radius (mm) | 78 |
| Head Dia (mm) | 76 |
| Fork Thickness (mm) | 2.5 |
| To Suit Fixing Bolt (mm) | 12 |

BIL GROUP LTD

Porte Marsh Road, Calne, Wiltshire, SN11 9BW

Registered in England No: 2603821

VAT Reg: GB572705729

