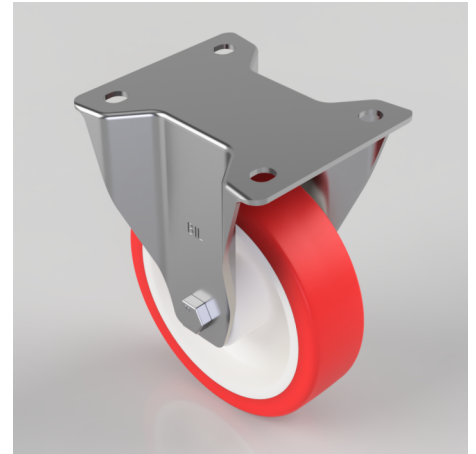


Polyurethane Fixed Castor 150mm 350kg Load

Product code: BZWBF150LNPB

Pressed steel fixed castor with a top plate fitted with a red polyurethane on white nylon centered wheel with roller bearings. 150mm wheel diameter, 40mm tread width, 190mm overall height, 135mm x 110mm top plate, 105mm x 80/75mm hole centres with a load capacity of 350kgs.



Diameter (mm)	150
Fixing Option	Plate
Castor Type	Fixed
Bearing Type	Roller
Height (mm)	190
Plate Size (mm)	135 x 110
Hole Centres (mm)	105 x 80
To Suit Fixing Bolt (mm)	12
Wheel Material	Polyurethane on Nylon
Colour / Shore Hardness	Red Polyurethane on Nylon Rim / 96 Shore A
Temperature Resistance	-20 °C TO +70 °C
Top Plate Thickness (mm)	5.5
Fork Thickness (mm)	5.5
Load Capacity (kg)	350
Tread (mm)	40

BIL GROUP LTD

Porte Marsh Road, Calne, Wiltshire, SN11 9BW

Registered in England No: 2603821

VAT Reg: GB572705729

