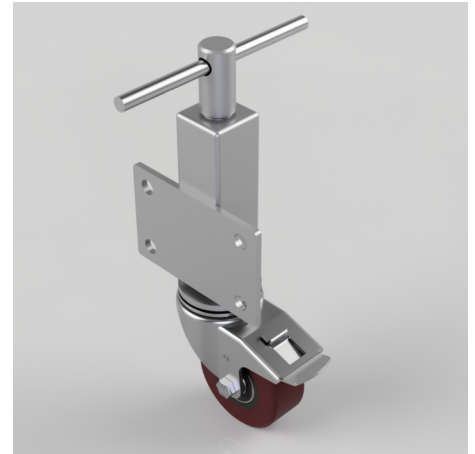


## Polyurethane Cast Iron Plate Swivel Castor Brake Locking Castor 100mm 250kg Load

**Product code: JAZ100PTBJSWB**

Zinc plated box jacking unit with side fitting plate and a 75mm lift fitted with a 100mm white zinc plated swivel pressed steel castor with a brown polyurethane tyred cast iron centred ball bearing wheel and total lock brake with a load capacity of 250kg Please note Jacking castors are rated on a different principal to other castors and we recommend the total lifted load is divided over just 2 jacking units. 1 extra safety point is when jacked up please beware of any obstacles as a sudden shock could result in the inner square tube bending around the outer tube. Please refer to the BIL catalogue or request a drawing



Diameter (mm)	100
Castor Height (mm)	128
Castor Type	Swivel with Total Lock Brake
Swivel Radius (mm)	120
Fixing Option	Plate
Bearing Type	Ball
To Suit Fixing Bolt (mm)	14
Wheel Material	Polyurethane on Cast Iron
Colour / Shore Hardness	Brown Polyurethane on Cast Iron Rim / 94 Shore A
Temperature Resistance	-20 °C TO +80 °C
Load Capacity (kg)	250
Tread (mm)	40
Height (mm)	366 / 441
Lifting Stroke (mm)	75

## BIL GROUP LTD

Porte Marsh Road, Calne, Wiltshire, SN11 9BW

Registered in England No: 2603821

VAT Reg: GB572705729

