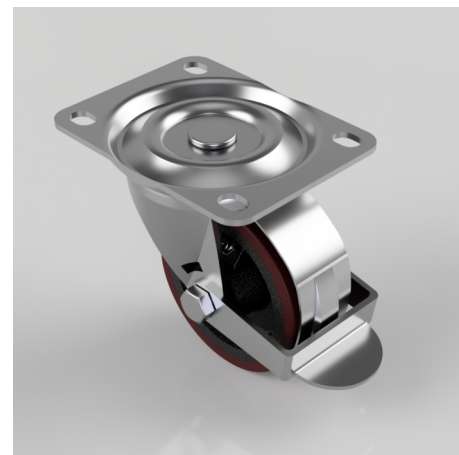


Polyurethane Cast Iron Plate Swivel Castor Brake 75mm 125kg Load

Product code: BZH75PTBR

Pressed steel swivel castor with a top plate fixing fitted with a brown polyurethane tyred cast iron centred wheel with a plain bore and a wheel brake. Wheel diameter 75mm, tread width 30mm, overall height 95mm, top plate 105mm x 80mm, hole centres 80mm x 60mm. Load capacity 125kg.



Diameter (mm)	75
Castor Type	Swivel with Wheel Brake
Fixing Option	Plate
Height (mm)	95
Wheel Material	Polyurethane on Cast Iron
Colour / Shore Hardness	Brown Polyurethane on Cast Iron Rim / 94 Shore A
Temperature Resistance	-20 °C TO +80 °C
Bearing Type	Roller
Load Capacity (kg)	125
Tread (mm)	30
Swivel Radius (mm)	84
Plate Size (mm)	105 X 80
Hole Centres (mm)	80 X 60
Top Plate Thickness (mm)	2.5
Fork Thickness (mm)	2.5
To Suit Fixing Bolt (mm)	8

BIL GROUP LTD

Porte Marsh Road, Calne, Wiltshire, SN11 9BW

Registered in England No: 2603821

VAT Reg: GB572705729

