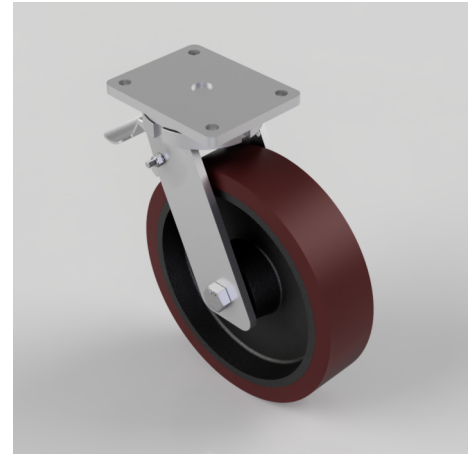


Polyurethane Cast Iron Plate Swivel Castor Brake 300mm 2200kg Load

Product code: BZQ300PTBJSWB

Fabricated swivel castor with a flat plate fixing fitted with a brown polyurethane tyred cast iron centred wheel with ball bearings and a total lock brake. Wheel diameter 300mm, tread width 75mm, overall height 365mm, plate size 175mm x 140mm, hole centres 140mm x 105mm. Load capacity 2200kg.



Diameter (mm)	300
Fixing Option	Plate
Castor Type	Swivel with Total Lock Brake
Bearing Type	Ball
Height (mm)	365
Plate Size (mm)	170 X 140
Hole Centres (mm)	140 X 105
To Suit Fixing Bolt (mm)	14
Wheel Material	Polyurethane on Cast Iron
Colour / Shore Hardness	Brown Polyurethane on Cast Iron Rim / 94 Shore A
Temperature Resistance	-20 °C TO +80 °C
Top Plate Thickness (mm)	12
Fork Thickness (mm)	10
Swivel Radius (mm)	232
Load Capacity (kg)	2200
Tread (mm)	75

BIL GROUP LTD

Porte Marsh Road, Calne, Wiltshire, SN11 9BW

Registered in England No: 2603821

VAT Reg: GB572705729

