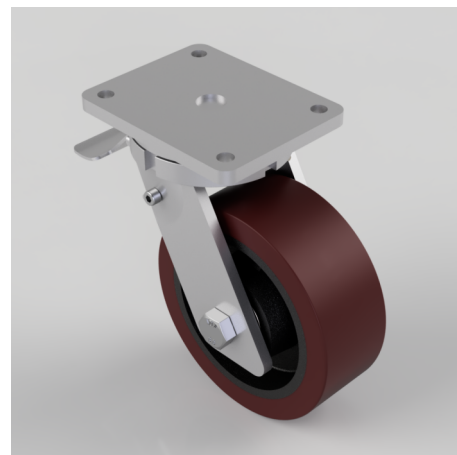


## Polyurethane Cast Iron Plate Swivel Castor Brake 200mm 1600kg Load

**Product code: BZQ200PTBJSWB**

Fabricated swivel castor with a top plate fixing fitted with a polyurethane on cast iron wheel with ball bearings and total lock brake. Wheel diameter 200mm, tread width 75mm, overall height 264mm, top plate 175mm x 140mm, hole centres 140mm x 105mm. Load capacity 1600kg.



|                          |  |
|--------------------------|--|
| Diameter (mm)            | 200  |
| Fixing Option            | Plate  |
| Castor Type              | Swivel with Total Lock Brake                     |
| Bearing Type             | Ball   |
| Height (mm)              | 264  |
| Plate Size (mm)          | 175 X 140  |
| Hole Centres (mm)        | 140 X 105  |
| To Suit Fixing Bolt (mm) | 14   |
| Wheel Material           | Polyurethane on Cast Iron                        |
| Colour / Shore Hardness  | Brown Polyurethane on Cast Iron Rim / 94 Shore A |
| Temperature Resistance   | -20 °C TO +80 °C                                 |
| Top Plate Thickness (mm) | 12   |
| Fork Thickness (mm)      | 10   |
| Swivel Radius (mm)       | 167  |
| Load Capacity (kg)       | 1600   |
| Tread (mm)               | 75   |

## BIL GROUP LTD

Porte Marsh Road, Calne, Wiltshire, SN11 9BW

Registered in England No: 2603821

VAT Reg: GB572705729

