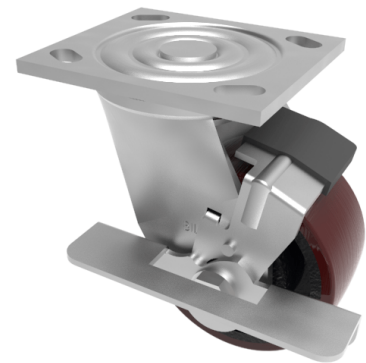


Polyurethane Cast Iron Plate Swivel Castor Brake 100mm 400kg Load

Product code: BZJ100PTBJBK/50/USA

Fabricated swivel castor with a top plate fixing fitted with a polyurethane wheel on a cast iron centre with ball bearings and side mounted wheel brake. Wheel diameter 100mm, tread width 50mm, overall height 143mm, top plate 115mm x 102mm, hole centres 92mm x 67mm and 76mm x 76mm . Load capacity 400kg



Diameter (mm)	100
Fixing Option	Plate
Castor Type	Swivel with Wheel Brake
Bearing Type	Ball
Height (mm)	143
Plate Size (mm)	115 x 102
Hole Centres (mm)	76/92 x 76/67
To Suit Fixing Bolt (mm)	10
Wheel Material	Polyurethane on Cast Iron
Colour / Shore Hardness	Brown Polyurethane on Cast Iron Rim / 94 Shore A
Temperature Resistance	-20 °C TO +80 °C
Top Plate Thickness (mm)	5.5
Fork Thickness (mm)	5.5
Swivel Radius (mm)	90
Load Capacity (kg)	400
Tread (mm)	50

BIL GROUP LTD

Porte Marsh Road, Calne, Wiltshire, SN11 9BW

Registered in England No: 2603821

VAT Reg: GB572705729

