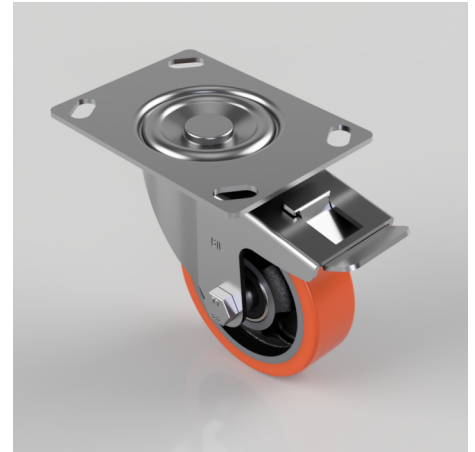


## Polyurethane Cast Iron Plate Swivel Castor Brake 100mm 250kg Load

**Product code: BZE100PTBJSWBLP**

Pressed steel swivel castor with a top plate fixing fitted with a brown polyurethane tyred cast iron centred wheel with ball bearings and a total lock brake. Wheel diameter 100mm, tread width 30mm, overall height 128mm, plate size 135mm x 110mm, hole centres 105mm x 80mm or 116mm x 63.5mm. Load capacity 250kg.



Diameter (mm)	100
Castor Type	Swivel with Total Lock Brake
Fixing Option	Plate
Height (mm)	128
Wheel Material	Polyurethane on Cast Iron
Colour / Shore Hardness	Brown Polyurethane on Cast Iron Rim / 94 Shore A
Temperature Resistance	-20 °C TO +80 °C
Bearing Type	Ball
Load Capacity (kg)	250
Tread (mm)	30
Swivel Radius (mm)	115
Plate Size (mm)	135 x 110
Hole Centres (mm)	105/116 x 80/64
Top Plate Thickness (mm)	3
Fork Thickness (mm)	3
To Suit Fixing Bolt (mm)	10

## BIL GROUP LTD

Porte Marsh Road, Calne, Wiltshire, SN11 9BW

Registered in England No: 2603821

VAT Reg: GB572705729

