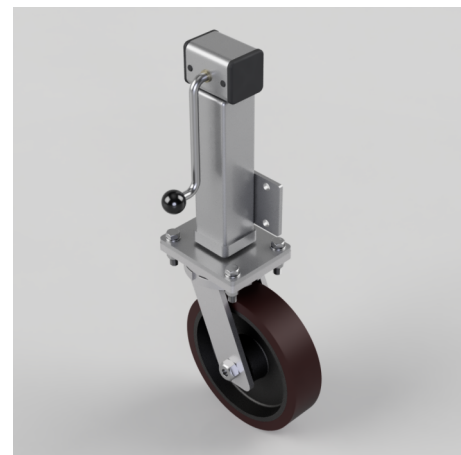


## Polyurethane Cast Iron Plate Swivel Castor 300mm 2200kg Load

**Product code: JAZHD300PTBJ**

Side plate fixing fabricated zinc plated jacking unit fitted with a 300mm swivel castor with a polyurethane on cast iron centred ball bearing wheel, Tread width 75mm plate size 200mmmm x 110mm, hole centres 135mm x 80mm, height 780mm/930mm, maximum lift is 150mmmm. Load capacity 2200kg. Please note Jacking castors are rated on a different principal to other castors and we recommend the total lifted load is divided over just 2 jacking units. for other dimensions please refer to the BIL catalogue or request a drawing. When jacked up to the height please beware of any obstacles as a sudden shock could result in the inner square tube bending around the outer tube. **DO NOT OVERWIND** Handle excessively more than what is needed as this will cause the pin in the gearbox to shear. (This is a safety precaution against over loading the unit)



Diameter (mm)	300
Castor Height (mm)	375
Castor Type	Swivel
Swivel Radius (mm)	224
Fixing Option	Plate
Bearing Type	Ball
To Suit Fixing Bolt (mm)	16
Wheel Material	Polyurethane on Cast Iron
Colour / Shore Hardness	Brown Polyurethane on Cast Iron Rim / 94 Shore A
Temperature Resistance	-20 °C TO +80 °C
Load Capacity (kg)	2200
Tread (mm)	75
Height (mm)	792 / 942
Lifting Stroke (mm)	150
Handle Option	Fixed

## BIL GROUP LTD

Porte Marsh Road, Calne, Wiltshire, SN11 9BW

Registered in England No: 2603821

VAT Reg: GB572705729

