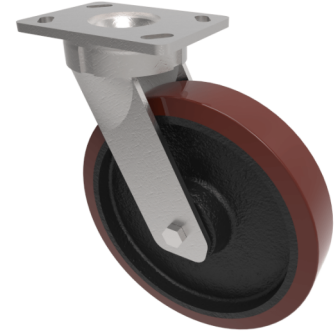


Polyurethane Cast Iron Plate Swivel Castor 250mm 1200kg Load

Product code: BZK250PTBJ/50

Fabricated swivel castor with a top plate fixing fitted with a brown polyurethane wheel on a cast iron centre with ball bearings. Wheel diameter 250mm, tread width 50mm, overall height 300mm, top plate 150mm x 110mm, hole centres 105mm x 80mm or 121mm x 59mm. Load capacity 1200kg



| | |
|--------------------------|--|
| Diameter (mm) | 250 |
| Fixing Option | Plate |
| Castor Type | Swivel |
| Bearing Type | Ball |
| Height (mm) | 300 |
| Plate Size (mm) | 150 x 110 |
| Hole Centres (mm) | 105/121 x 80/59 |
| To Suit Fixing Bolt (mm) | 12 |
| Wheel Material | Polyurethane on Cast Iron |
| Colour / Shore Hardness | Brown Polyurethane on Cast Iron Rim / 94 Shore A |
| Temperature Resistance | -20 °C TO +80 °C |
| Top Plate Thickness (mm) | 7.5 |
| Fork Thickness (mm) | 6 |
| Swivel Radius (mm) | 197 |
| Load Capacity (kg) | 1200 |
| Tread (mm) | 50 |

BIL GROUP LTD

Porte Marsh Road, Calne, Wiltshire, SN11 9BW

Registered in England No: 2603821

VAT Reg: GB572705729

