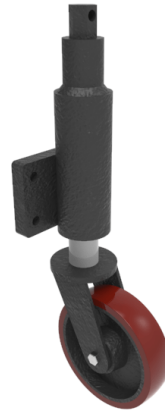


## Polyurethane Cast Iron Plate Swivel Castor 200mm 1000kg Load

**Product code: JAZXXHK200PTBJ**

Fabricated 75mm lift swivel jacking bracket with fixing plate fitted with a brown polyurethane tyred cast iron centred wheel with ball bearings. Wheel diameter 200mm, tread width 50mm, overall height when open 683mm and 607mm when closed, plate size 152mm x 106mm, hole centres 114mm x 64mm Load capacity 1000kg.



Diameter (mm)	200
Height (mm)	621
Castor Type	Swivel
Swivel Radius (mm)	160
Fixing Option	Plate
Bearing Type	Ball
To Suit Fixing Bolt (mm)	12
Wheel Material	Polyurethane on Cast Iron
Colour / Shore Hardness	Brown Polyurethane on Cast Iron Rim / 94 Shore A
Temperature Resistance	-20 °C TO +80 °C
Load Capacity (kg)	1000
Tread (mm)	50
Lifting Stroke (mm)	75

## BIL GROUP LTD

Porte Marsh Road, Calne, Wiltshire, SN11 9BW

Registered in England No: 2603821

VAT Reg: GB572705729

