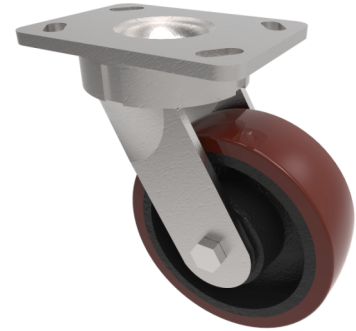


Polyurethane Cast Iron Plate Swivel Castor 150mm 1000kg Load

Product code: BZK150PTBJ/WT



Fabricated swivel castor with a top plate fitted with a brown polyurethane tyre on a cast iron centred wheel with ball bearings. Wheel diameter 150mm, tread width 60mm, overall height 200mm, top plate 150mm x 110mm, hole centres 105mm x 80mm or 121mm x 59mm. Load cap 1000kg. (Catalogue SKU BZK150PTBJ/60)

Diameter (mm)	150
Fixing Option	Plate
Castor Type	Swivel
Bearing Type	Ball
Height (mm)	200
Plate Size (mm)	150 x 110
Hole Centres (mm)	105/121 x 80/59
To Suit Fixing Bolt (mm)	12
Wheel Material	Polyurethane on Cast Iron
Colour / Shore Hardness	Brown Polyurethane on Cast Iron Rim / 94 Shore A
Temperature Resistance	-20 °C TO +80 °C
Top Plate Thickness (mm)	7.5
Fork Thickness (mm)	6
Swivel Radius (mm)	130
Load Capacity (kg)	1000
Tread (mm)	50

BIL GROUP LTD

Porte Marsh Road, Calne, Wiltshire, SN11 9BW

Registered in England No: 2603821

VAT Reg: GB572705729

