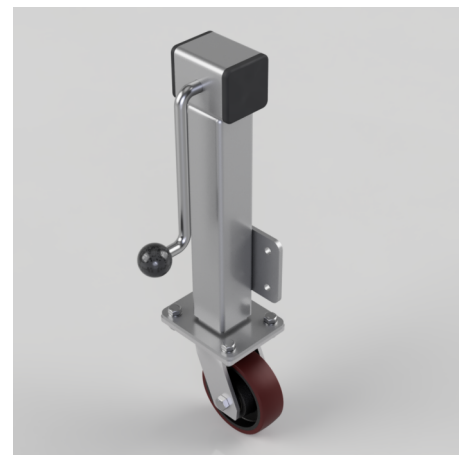


## Polyurethane Cast Iron Plate Swivel Castor 125mm 400kg Load

**Product code: JAZHS125PTBJ**

Side winding jacking unit with maximum lift of 200mm fitted with a Fabricated swivel castor with a top plate fixing fitted with a brown polyurethane tyred cast iron centred wheel with ball bearings. Wheel diameter 125mm, tread width 40mm, maximum Load for the complete unit is capacity 400kg. Please note Jacking castors are rated on a different principal to other castors and we recommend the total lifted load is divided over just 2 jacking units. for other dimensions please refer to the BIL catalogue or request a drawing. when jacked up to the height please be aware of any obstacles as a sudden shock could result in the inner square tube bending around the outer tube. **DO NOT OVERWIND** Handle excessively more than what is needed as this will cause the pin in the gearbox to shear. (This is a safety precaution against over loading the unit)



Diameter (mm)	125
Castor Height (mm)	165
Castor Type	Swivel
Swivel Radius (mm)	101
Fixing Option	Plate
Bearing Type	Ball
To Suit Fixing Bolt (mm)	10
Wheel Material	Polyurethane on Cast Iron
Colour / Shore Hardness	Brown Polyurethane on Cast Iron Rim / 94 Shore A
Temperature Resistance	-20 °C TO +80 °C
Load Capacity (kg)	400
Tread (mm)	40
Height (mm)	572 / 772
Lifting Stroke (mm)	200
Handle Option	Fixed

## BIL GROUP LTD

Porte Marsh Road, Calne, Wiltshire, SN11 9BW

Registered in England No: 2603821

VAT Reg: GB572705729

