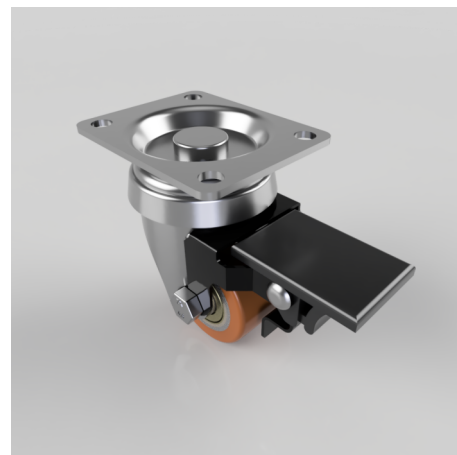


## Polyurethane Cast Iron Plate Swivel Braked 35mm 100kg Load

**Product code: BZXH35PTBJBR**

Pressed steel swivel castor fitted with a brown polyurethane tyred cast iron centred wheel with a ball bearing and wheel brake. Wheel diameter 35mm, tread width 27mm, overall height 65mm. plate size 60mm x 48mm, hole centres 48mm x 34mm Load capacity 100kg.



Fixing Option	Plate
Castor Type	Swivel with Wheel Brake
Load Capacity (kg)	100
Wheel Material	Polyurethane on Cast Iron
Diameter (mm)	35
Bearing Type	Ball
Tread (mm)	27
Height (mm)	65
Colour / Shore Hardness	Orange Polyurethane on Cast Iron Rim / 94 Shore A
Plate Size (mm)	60 x 48
Hole Centres (mm)	48 x 35
Top Plate Thickness (mm)	2
Fork Thickness (mm)	2
Fixing Bolt (mm)	8
Temperature Resistance	-10 °C TO +80 °C
Swivel Radius (mm)	64

## BIL GROUP LTD

Porte Marsh Road, Calne, Wiltshire, SN11 9BW

Registered in England No: 2603821

VAT Reg: GB572705729

