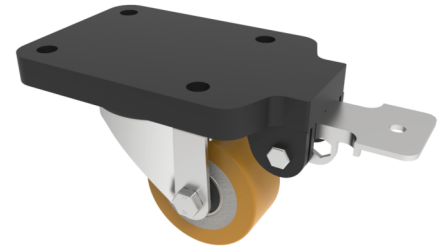


## Polyurethane Cast Iron Plate Swivel Brake Castor 80mm 250kg Load

**Product code: BZEH80PTBJFPSWB**



Pressed steel swivel castor with a top plate fixing fitted with a polyurethane tyre wheel on cast iron centre with ball bearings and a fixed position total lock brake. Wheel diameter 80mm, tread width 36mm, overall height 125mm, top plate 180mm x 115mm, hole centres 105mm x 80mm. Load capacity 250kg.

Fixing Option	Plate
Diameter (mm)	80
Load Capacity (kg)	250
Castor Type	Swivel with Fixed Position Total Lock Brake
Height (mm)	125
Wheel Material	Polyurethane on Cast Iron
Colour / Shore Hardness	Brown Polyurethane on Cast Iron Rim / 94 Shore A
Bearing Type	Ball
Tread (mm)	36
Fork Thickness (mm)	4
Temperature Resistance	-20 °C TO +80 °C
Plate Size (mm)	180 x 115
Hole Centres (mm)	105 x 80
Swivel Radius (mm)	164
Top Plate Thickness (mm)	18
To Suit Fixing Bolt (mm)	10

### BIL GROUP LTD

Porte Marsh Road, Calne, Wiltshire, SN11 9BW

Registered in England No: 2603821

VAT Reg: GB572705729

