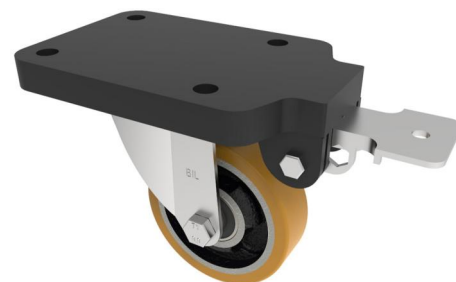


## Polyurethane Cast Iron Plate Swivel Brake Castor 100mm 250kg Load

**Product code: BZEH100PTBJFPSWB**

Pressed steel swivel castor with a top plate fixing fitted with a brown polyurethane tyred cast iron centred wheel with ball bearings and fixed position total lock brake. Wheel diameter 100mm, tread width 30mm, overall height 144mm, plate size 180mm x 115mm, hole centres 105mm x 80mm. Load capacity 250kg.



Fixing Option	Plate
Diameter (mm)	100
Load Capacity (kg)	250
Castor Type	Swivel with Fixed Position Total Lock Brake
Height (mm)	144
Wheel Material	Polyurethane on Cast Iron
Colour / Shore Hardness	Brown Polyurethane on Cast Iron Rim / 94 Shore A
Bearing Type	Ball
Tread (mm)	100
Fork Thickness (mm)	3
Temperature Resistance	-20 °C TO +80 °C
Plate Size (mm)	180 x 115
Hole Centres (mm)	105 x 80
Swivel Radius (mm)	164
Top Plate Thickness (mm)	18
To Suit Fixing Bolt (mm)	10

## BIL GROUP LTD

Porte Marsh Road, Calne, Wiltshire, SN11 9BW

Registered in England No: 2603821

VAT Reg: GB572705729

