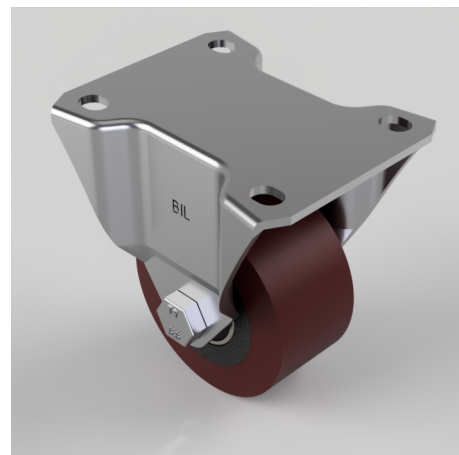


Polyurethane Cast Iron Plate Fixed Castor 75mm 300kg Load

Product code: BZHDF75PTBJ

Pressed steel fixed castor with a top plate fixing fitted with a brown polyurethane on cast iron wheel with ball bearings and total lock brake. Wheel diameter 75mm, tread width 40mm, overall height 108mm, top plate 105mm x 86mm, hole centres 80mm x 60mm. Load capacity 300kg.



Diameter (mm)	75
Castor Type	Fixed
Fixing Option	Plate
Height (mm)	108
Wheel Material	Polyurethane on Cast Iron
Colour / Shore Hardness	Brown Polyurethane on Cast Iron Rim / 94 Shore A
Temperature Resistance	-20 °C TO +80 °C
Bearing Type	Ball
Load Capacity (kg)	300
Tread (mm)	40
Plate Size (mm)	105 x 86
Hole Centres (mm)	80 X 60
Top Plate Thickness (mm)	3
Fork Thickness (mm)	3
To Suit Fixing Bolt (mm)	8

BIL GROUP LTD

Porte Marsh Road, Calne, Wiltshire, SN11 9BW

Registered in England No: 2603821

VAT Reg: GB572705729

