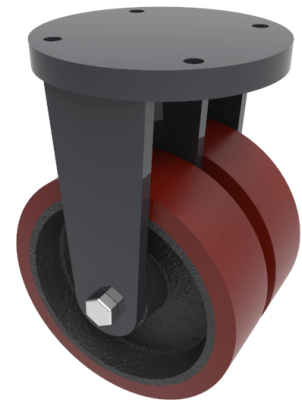


## Polyurethane Cast Iron Plate Fixed Castor 400mm 9200kg Load

**Product code: 2BZSZF400PTBJ**

Heavy duty fabricated twin wheel fixed castor fitted with 2 x 95 shore A polyurathane tyred cast iron centred wheel with ball bearings, Wheel diameter 400mm, Tread width 125mm x 2, Overall height 570mm, Top plate 365mm diameter, Hole centres 4 holes at 300mm pcd, Load capacity 9200kg  
 \*\*MANUFACTURED TO ORDER\*\*



Diameter (mm)	400
Fixing Option	Plate
Castor Type	Fixed
Bearing Type	Ball
Plate Size (mm)	365
Hole Centres (mm)	365
Height (mm)	570
To Suit Fixing Bolt (mm)	24
Wheel Material	Polyurethane on Cast Iron
Colour / Shore Hardness	Brown Polyurethane on Cast Iron Rim / 94 Shore A
Temperature Resistance	&quot;-20 °C TO +80 °C
Tread (mm)	2 x 125
Load Capacity (kg)	9200

### BIL GROUP LTD

Porte Marsh Road, Calne, Wiltshire, SN11 9BW

Registered in England No: 2603821

VAT Reg: GB572705729

