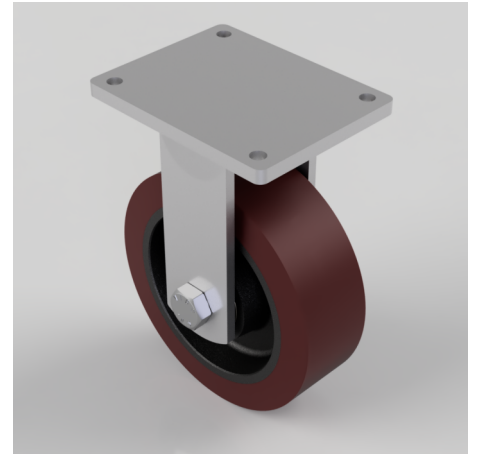


## Polyurethane Cast Iron Plate Fixed Castor 300mm 3000kg Load

**Product code: BZQFXX300PTBJ**

Fabricated fixed castor with a top plate fixing fitted with a polyurethane tyred cast iron centred wheel with ball bearings. Wheel diameter 300mm, tread width 100mm, overall height 395mm, top plate 255mm x 200mm, hole centres 210mm x 160mm. Load capacity 3000kg.



Diameter (mm)	300
Fixing Option	Plate
Castor Type	Fixed
Bearing Type	Ball
Height (mm)	395
Plate Size (mm)	255 X 200
Hole Centres (mm)	210 X 160
To Suit Fixing Bolt (mm)	16
Wheel Material	Polyurethane on Cast Iron
Colour / Shore Hardness	Brown Polyurethane on Cast Iron Rim / 94 Shore A
Temperature Resistance	-20 °C TO +80 °C
Top Plate Thickness (mm)	16
Fork Thickness (mm)	12
Load Capacity (kg)	3000
Tread (mm)	100

## BIL GROUP LTD

Porte Marsh Road, Calne, Wiltshire, SN11 9BW

Registered in England No: 2603821

VAT Reg: GB572705729

