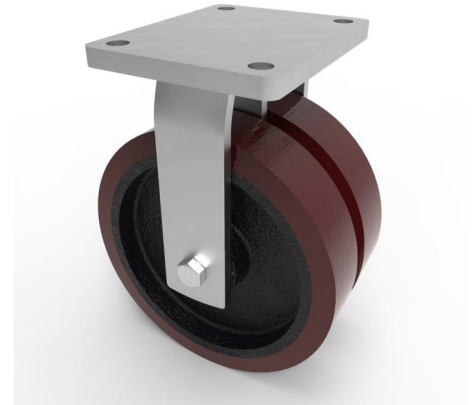


Polyurethane Cast Iron Plate Fixed Castor 250mm 2800kg Load

Product code: 2BZQXFL250PTBJ

Fabricated twin wheel fixed castor with a top plate fixing fitted with polyurethane tyred wheels with cast iron centres and ball bearings, Wheel diameter 250mm, Tread width 60mm + 60mm, Overall height 314mm, top plate 200mm x 160mm, hole centres 160mm x 120mm. Load capacity 2800kg.



Diameter (mm)	250
Fixing Option	Plate
Castor Type	Fixed
Bearing Type	Ball
Plate Size (mm)	200 X 160
Hole Centres (mm)	160 X 120
Height (mm)	314
To Suit Fixing Bolt (mm)	16
Wheel Material	Polyurethane on Cast Iron
Colour / Shore Hardness	Brown Polyurethane on Cast Iron Rim / 94 Shore A
Temperature Resistance	"-20 °C TO +80 °C
Tread (mm)	2 x 60
Load Capacity (kg)	2800
Top Plate Thickness (mm)	16
Fork Thickness (mm)	10

BIL GROUP LTD

Porte Marsh Road, Calne, Wiltshire, SN11 9BW

Registered in England No: 2603821

VAT Reg: GB572705729

