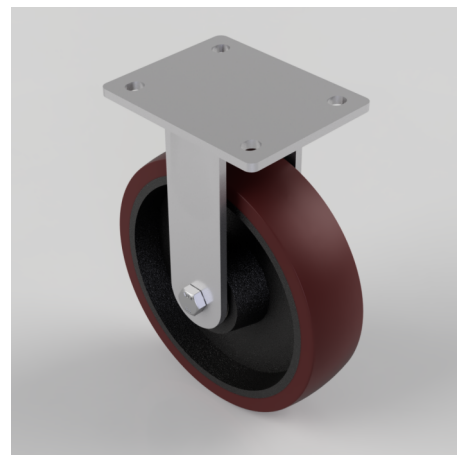


Polyurethane Cast Iron Plate Fixed Castor 200mm 900kg Load

Product code: BZKFL200PTBJ

Fabricated fixed castor with a flat plate fixing fitted with a brown polyurethane tyred on cast iron centre wheel with ball bearings. Wheel diameter 200mm, tread width 50mm, overall height 245mm, plate size 138mm x 110mm, hole centres 105mm x 80mm/75mm. Load capacity 900kg.



Diameter (mm)	200
Fixing Option	Plate
Castor Type	Fixed
Bearing Type	Ball
Height (mm)	245
Plate Size (mm)	138 x 110
Hole Centres (mm)	105 x 80/75
To Suit Fixing Bolt (mm)	10
Wheel Material	Polyurethane on Cast Iron
Colour / Shore Hardness	Brown Polyurethane on Cast Iron Rim / 94 Shore A
Temperature Resistance	-20 °C TO +80 °C
Top Plate Thickness (mm)	6
Fork Thickness (mm)	6
Load Capacity (kg)	900
Tread (mm)	50

BIL GROUP LTD

Porte Marsh Road, Calne, Wiltshire, SN11 9BW

Registered in England No: 2603821

VAT Reg: GB572705729

