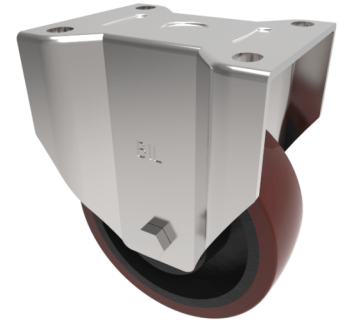


Polyurethane Cast Iron Plate Fixed Castor 200mm 800kg Load

Product code: BZPF200PTBJ

Pressed steel fixed castor with a flat plate fixing fitted with a brown polyurethane tyred on cast iron centre wheel with a ball bearing. Wheel diameter 200mm, tread width 50mm, overall height 239mm, plate size 135mm x 110, hole centres 105mm x 80mm. Load capacity 800kg.



Diameter (mm)	200
Castor Type	Fixed
Fixing Option	Plate
Height (mm)	239
Wheel Material	Polyurethane on Cast Iron
Colour / Shore Hardness	Brown Polyurethane on Cast Iron Rim / 94 Shore A
Temperature Resistance	-20 °C TO +80 °C
Bearing Type	Ball
Load Capacity (kg)	800
Tread (mm)	50
Plate Size (mm)	135 x 110
Hole Centres (mm)	105 x 80
Top Plate Thickness (mm)	6
Fork Thickness (mm)	4
To Suit Fixing Bolt (mm)	12

BIL GROUP LTD

Porte Marsh Road, Calne, Wiltshire, SN11 9BW

Registered in England No: 2603821

VAT Reg: GB572705729

