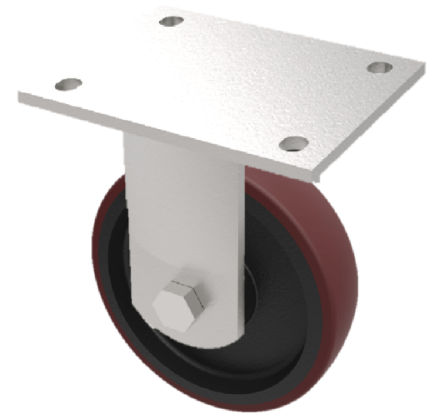


## Polyurethane Cast Iron Plate Fixed Castor 150mm 600kg Load

**Product code: BZJF150PTBJ**

Fabricated fixed castor with a top plate fixing fitted with a polyurethane tyred cast iron centred wheel with ball journal bearings. Wheel diameter 150mm, tread width 50mm, overall height 190mm, top plate 135mm x 110mm, hole centres 105mm x 80mm. Load capacity 600kg.



Diameter (mm)	150
Fixing Option	Plate
Castor Type	Fixed
Bearing Type	Ball
Height (mm)	190
Plate Size (mm)	135 x 110
Hole Centres (mm)	105 x 80
To Suit Fixing Bolt (mm)	10
Wheel Material	Polyurethane on Cast Iron
Colour / Shore Hardness	Brown Polyurethane on Cast Iron Rim / 94 Shore A
Temperature Resistance	-20 °C TO +80 °C
Top Plate Thickness (mm)	5.5
Fork Thickness (mm)	5.5
Load Capacity (kg)	600
Tread (mm)	50

### BIL GROUP LTD

Porte Marsh Road, Calne, Wiltshire, SN11 9BW

Registered in England No: 2603821

VAT Reg: GB572705729

