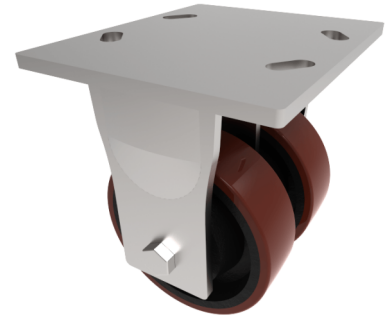


## Polyurethane Cast Iron Plate Fixed Castor 125mm 800kg Load

**Product code: 2BZKF125PTBJ**

Twin wheeled fabricated fixed castor with a top plate fixing fitted with 2 x polyurethane on cast iron centred wheels with ball journal bearings. Wheel diameter 2 x 125mm, tread width 2 x 40mm, overall height 175mm, top plate 175mm x 150mm, hole centres 105mm x 80mm or 121mm x 59mm. Load capacity 800kg.



Diameter (mm)	125
Fixing Option	Plate
Castor Type	Fixed
Bearing Type	Ball
Plate Size (mm)	175 x 150
Hole Centres (mm)	105/121 x 80/59
Height (mm)	177
To Suit Fixing Bolt (mm)	12
Wheel Material	Polyurethane on Cast Iron
Colour / Shore Hardness	Brown Polyurethane on Cast Iron Rim / 94 Shore A
Temperature Resistance	&quot;-20 °C TO +80 °C
Tread (mm)	2 x 50
Load Capacity (kg)	800
Top Plate Thickness (mm)	7.5
Fork Thickness (mm)	6

## BIL GROUP LTD

Porte Marsh Road, Calne, Wiltshire, SN11 9BW

Registered in England No: 2603821

VAT Reg: GB572705729

