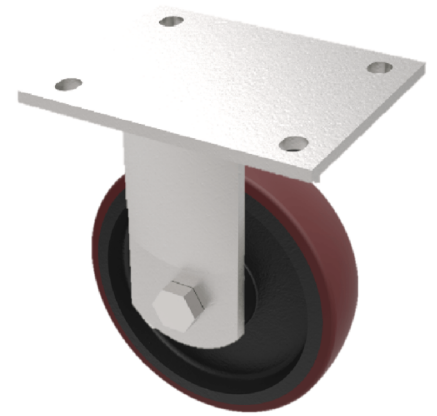


Polyurethane Cast Iron Plate Fixed Castor 125mm 400kg Load

Product code: BZKFL125PTBJ

Fabricated fixed castor with a top plate fixing fitted with a brown polyurethane tyred on cast iron centred wheel with ball bearing. Wheel diameter 125mm, tread width 40mm, overall height 165mm, plate size 138mm x 110mm, hole centres 105mm x 80/75mm. Load capacity 400kg.



Diameter (mm)	125
Fixing Option	Plate
Castor Type	Fixed
Bearing Type	Ball
Height (mm)	165
Plate Size (mm)	138 x 110
Hole Centres (mm)	105 x 80/75
To Suit Fixing Bolt (mm)	10
Wheel Material	Polyurethane on Cast Iron
Colour / Shore Hardness	Brown Polyurethane on Cast Iron Rim / 94 Shore A
Temperature Resistance	-20 °C TO +80 °C
Top Plate Thickness (mm)	7.5
Fork Thickness (mm)	6
Load Capacity (kg)	400
Tread (mm)	40

BIL GROUP LTD

Porte Marsh Road, Calne, Wiltshire, SN11 9BW

Registered in England No: 2603821

VAT Reg: GB572705729

