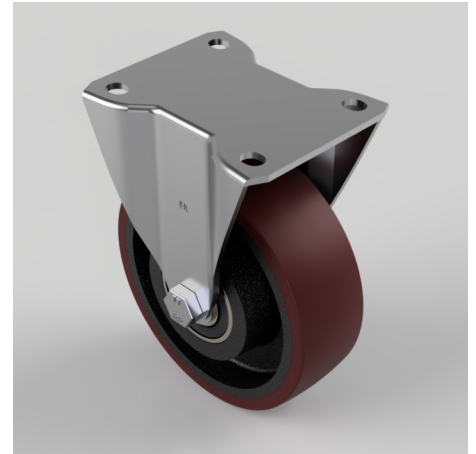


## Polyurethane Cast Iron Plate Fixed Castor 125mm 400kg Load

**Product code: BZHF125PTBJ**

Pressed steel fixed castor with a top plate fixing fitted with a brown polyurethane tyre on a cast iron centred wheel with a ball bearing. Wheel diameter 125mm, tread width 40mm, overall height 156mm, top plate 105mm x 88mm, hole centres 80mm x 60mm. Load capacity 400kg.



Diameter (mm)	125
Castor Type	Fixed
Fixing Option	Plate
Height (mm)	156
Wheel Material	Polyurethane on Cast Iron
Colour / Shore Hardness	Brown Polyurethane on Cast Iron Rim / 94 Shore A
Temperature Resistance	-20 °C TO +80 °C
Bearing Type	Ball
Load Capacity (kg)	400
Tread (mm)	40
Plate Size (mm)	105 x 86
Hole Centres (mm)	80 X 60
Top Plate Thickness (mm)	3
Fork Thickness (mm)	3
To Suit Fixing Bolt (mm)	8

## BIL GROUP LTD

Porte Marsh Road, Calne, Wiltshire, SN11 9BW

Registered in England No: 2603821

VAT Reg: GB572705729

