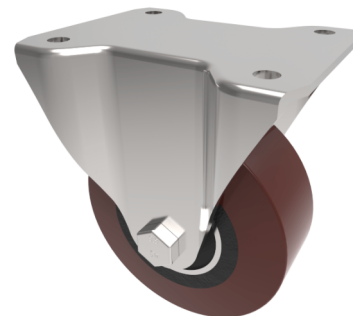


Polyurethane Cast Iron Plate Fixed Castor 125mm 295kg Load

Product code: BZHF125PTBJLP

Pressed steel fixed castor with a large top plate fixing fitted with a brown polyurethane tyred on a cast iron centred wheel with a ball bearing. Wheel diameter 125mm, tread width 40mm, overall height 153mm, top plate 145mm x 108mm, hole centres 105mm x 80mm or 116mm x 64mm. Load capacity 295kg.



Height (mm)	153
Plate Size (mm)	151 x 108
Hole Centres (mm)	105/100 x 80/76
Bearing Type	Ball
Diameter (mm)	125
Wheel Material	Polyurethane on Cast Iron
Fixing Option	Plate
Castor Type	Fixed
Load Capacity (kg)	295
To Suit Fixing Bolt (mm)	10

BIL GROUP LTD

Porte Marsh Road, Calne, Wiltshire, SN11 9BW

Registered in England No: 2603821

VAT Reg: GB572705729

