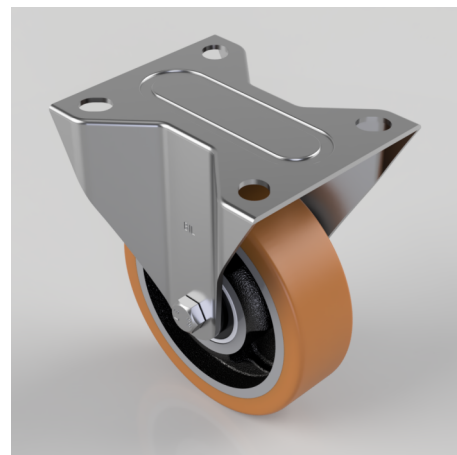


## Polyurethane Cast Iron Plate Fixed Castor 100mm 180kg Load

**Product code: BZMMF100PTBJ**

Pressed steel fixed castor top plate fixing fitted with a brown polyurethane tyre on black cast iron centred wheel with ball bearings. Wheel diameter 100mm, tread width 30mm, overall height 128mm, top plate 105mm x 85mm, hole centres 80mm x 60mm. Load capacity 180kg.



Diameter (mm)	100
Castor Type	Fixed
Fixing Option	Plate
Height (mm)	128
Wheel Material	Polyurethane on Cast Iron
Colour / Shore Hardness	Brown Polyurethane on Cast Iron Rim / 94 Shore A
Temperature Resistance	-20 °C TO +80 °C
Bearing Type	Ball
Load Capacity (kg)	180
Tread (mm)	30
Plate Size (mm)	105 X 85
Hole Centres (mm)	80 X 60
Top Plate Thickness (mm)	2
Fork Thickness (mm)	2
To Suit Fixing Bolt (mm)	8

## BIL GROUP LTD

Porte Marsh Road, Calne, Wiltshire, SN11 9BW

Registered in England No: 2603821

VAT Reg: GB572705729

