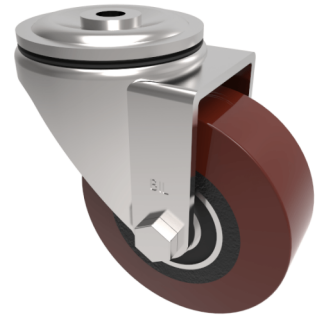


Polyurethane Cast Iron Bolt Hole Swivel Castor 80mm 250kg Load

Product code: BZH80PTBJBH12

Pressed steel swivel castor with a 12mm bolt hole fitted with a polyurethane tyred wheel on cast iron centre with ball bearings. Wheel diameter 80mm, tread width 36mm, overall height 111mm, Load capacity 250kg.



Diameter (mm)	80
Castor Type	Swivel
Fixing Option	Bolt Hole
Height (mm)	110
Wheel Material	Polyurethane on Cast Iron
Colour / Shore Hardness	Brown Polyurethane on Cast Iron Rim / 94 Shore A
Temperature Resistance	-20 °C TO +80 °C
Bearing Type	Ball
Load Capacity (kg)	250
Tread (mm)	36
Swivel Radius (mm)	78
Head Dia (mm)	76
Fork Thickness (mm)	4
To Suit Fixing Bolt (mm)	12

BIL GROUP LTD

Porte Marsh Road, Calne, Wiltshire, SN11 9BW

Registered in England No: 2603821

VAT Reg: GB572705729

