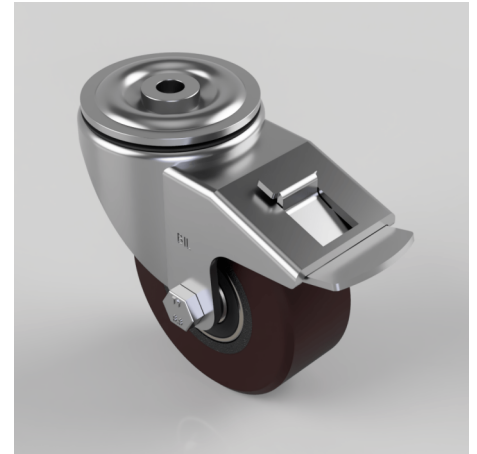


Polyurethane Cast Iron Bolt Hole Swivel Castor 100mm 300kg Load

Product code: BZH100PTBJBH12SWB

Pressed steel swivel castor with a 12mm bolt hole fixing fitted with a polyurethane tyred cast iron centred wheel with ball bearings and a total lock brake. Wheel diameter 100mm, tread width 40mm, overall height 128mm. Load capacity 300kg.



Diameter (mm)	100
Castor Type	Swivel with Total Lock Brake
Fixing Option	Bolt Hole
Height (mm)	128
Wheel Material	Polyurethane on Cast Iron
Colour / Shore Hardness	Brown Polyurethane on Cast Iron Rim / 94 Shore A
Temperature Resistance	-20 °C TO +80 °C
Bearing Type	Ball
Load Capacity (kg)	300
Tread (mm)	40
Swivel Radius (mm)	90
Head Dia (mm)	76
Fork Thickness (mm)	4
To Suit Fixing Bolt (mm)	12

BIL GROUP LTD

Porte Marsh Road, Calne, Wiltshire, SN11 9BW

Registered in England No: 2603821

VAT Reg: GB572705729

