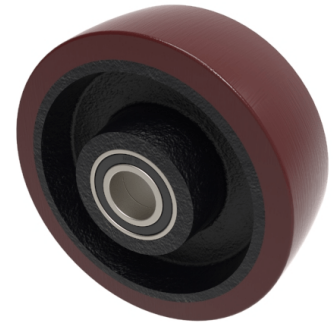


## Polyurethane Cast Iron 150mm Ball Bearing Wheel 750kg Load

**Product code: BZXH150WPTBJM25**

Brown polyurethane wheel on a cast iron centre with ball journal bearings. Wheel diameter 150mm, tread width 50mm, bore 25mm, hub 60mm. Load capacity 750kg. NB with this wheel we would take a standard wheel with a 47mm x 14mm bearing seat and fit a 6005 ball bearing but this will set the bearings back in to the wheel hub 2mm each side..



Bearing Type	Ball
Bore Size (mm)	25
Diameter (mm)	150
Hub Width (mm)	60
Load Capacity (kg)	750
Tread (mm)	50
Wheel Material	Polyurethane on Cast Iron
Colour / Shore Hardness	Brown Polyurethane on Cast Iron Rim / 94 Shore A
Temperature Resistance	-20 °C TO +80 °C

## BIL GROUP LTD

Porte Marsh Road, Calne, Wiltshire, SN11 9BW

Registered in England No: 2603821

VAT Reg: GB572705729

