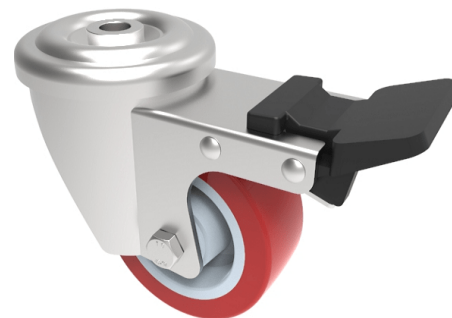


## Polyurethane Bolt Hole Swivel Castor Brake 80mm 190kg Load

**Product code: SSXM80NPBH12SWB**

Grade 304 Stainless steel swivel castor with a 12mm bolt hole fixing fitted with a red polyurethane tyre white nylon centred wheel with a plain bore and total lock brake. Wheel diameter 80mm, tread width 33mm, overall height 108mm, Load capacity 190kg.



|                          |  |
|--------------------------|--|
| Diameter (mm)            | 80   |
| Fixing Option            | Bolt Hole                                  |
| Castor Type              | Swivel with Total Lock Brake               |
| Height (mm)              | 110  |
| Wheel Material           | Polyurethane on Nylon                      |
| Colour / Shore Hardness  | Red Polyurethane on Nylon Rim / 96 Shore A |
| Bearing Type             | Plain                                      |
| Tread (mm)               | 30   |
| Fork Thickness (mm)      | 2.5  |
| To Suit Fixing Bolt (mm) | 12   |
| Load Capacity (kg)       | 190  |
| Temperature Resistance   | -30 °C to +130 °C                          |
| Head Dia (mm)            | 78   |
| Swivel Radius (mm)       | 125  |

## BIL GROUP LTD

Porte Marsh Road, Calne, Wiltshire, SN11 9BW

Registered in England No: 2603821

VAT Reg: GB572705729

