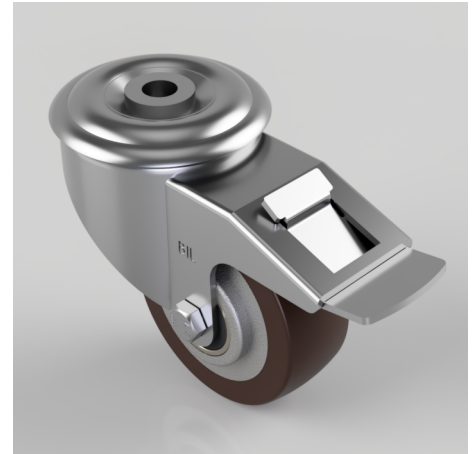


Polyurethane Aluminium Bolt Hole Swivel Castor Brake 80mm 150kg Load

Product code: BZMM80PABJBH12SWB

Pressed steel swivel castor with a 12mm bolt hole fitted with a brown polyurethane aluminium centred wheel with ball bearings with a total lock brake. Wheel diameter 80mm, tread width 30mm, overall height 105mm, Load capacity 150kg.



Diameter (mm)	80
Castor Type	Swivel with Total Lock Brake
Fixing Option	Bolt Hole
Height (mm)	105
Wheel Material	Polyurethane on Aluminium
Colour / Shore Hardness	Brown Polyurethane on Aluminium Rim / 93 Shore A
Temperature Resistance	-20 °C TO +70 °C
Bearing Type	Ball
Load Capacity (kg)	150
Tread (mm)	30
Swivel Radius (mm)	112
Head Dia (mm)	76
Fork Thickness (mm)	2.5
To Suit Fixing Bolt (mm)	12

BIL GROUP LTD

Porte Marsh Road, Calne, Wiltshire, SN11 9BW

Registered in England No: 2603821

VAT Reg: GB572705729

